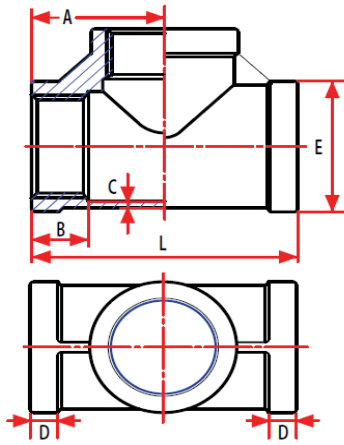


MSS SP-114 HEAVY PATTERN STAINLESS STEEL PIPE FITTINGS

TEES - FEMALE NPT



304 SS	316 SS	Size	Weight (LBS)	A	B	C	D	E	L
BF4381060720	BF4381065420	1/8"	0.14	0.81	0.27	0.12	0.21	0.76	1.61
BF4381060740	BF4381065440	1/4"	0.16	0.81	0.38	0.14	0.21	0.85	1.62
BF4381060760	BF4381065460	3/8"	0.22	0.94	0.38	0.10	0.22	1.05	1.88
BF4381060780	BF4381065480	1/2"	0.35	1.10	0.53	0.10	0.26	1.21	2.20
BF4381060800	BF4381065500	3/4"	0.54	1.27	0.53	0.11	0.31	1.47	2.54
BF4381060820	BF4381065520	1"	0.83	1.47	0.65	0.12	0.32	1.77	2.94
BF4381060840	BF4381065540	1-1/4"	1.33	1.72	0.69	0.14	0.38	2.15	3.44
BF4381060860	BF4381065560	1-1/2"	1.69	1.88	0.72	0.15	0.38	2.44	3.76
BF4381060880	BF4381065580	2"	2.62	2.22	0.79	0.16	0.45	2.96	4.44
BF4381060900	BF4381065600	2-1/2"	3.96	2.63	0.96	0.20	0.52	3.34	5.26
BF4381060920	BF4381065620	3"	5.76	2.99	1.05	0.22	0.57	4.05	5.98
BF4381060940	BF4381065640	4"	10.14	3.73	1.14	0.26	0.69	5.10	7.46

MSS SP-114 HEAVY PATTERN STAINLESS STEEL PIPE FITTINGS

Stainless steel MSS-SP114 heavy pattern fittings are investment castings.
 Available in a full range from 1/8" to 4" in both 304 and 316 grades of stainless steel.
 All fittings are threaded to NPT standard in compliance to ASME B1.20.
 Castings are made in accordance to ASTM 351 and heat treated and tested in accordance to ASTM A262

OEMS AND MANUFACTURERS TRUST BFO TO KEEP YOUR OPERATION FLOWING SMOOTHLY

BUYFITTINGSONLINE.COM | 1.800.569.0810 | BFO@QMCTECHNOLOGIES.COM